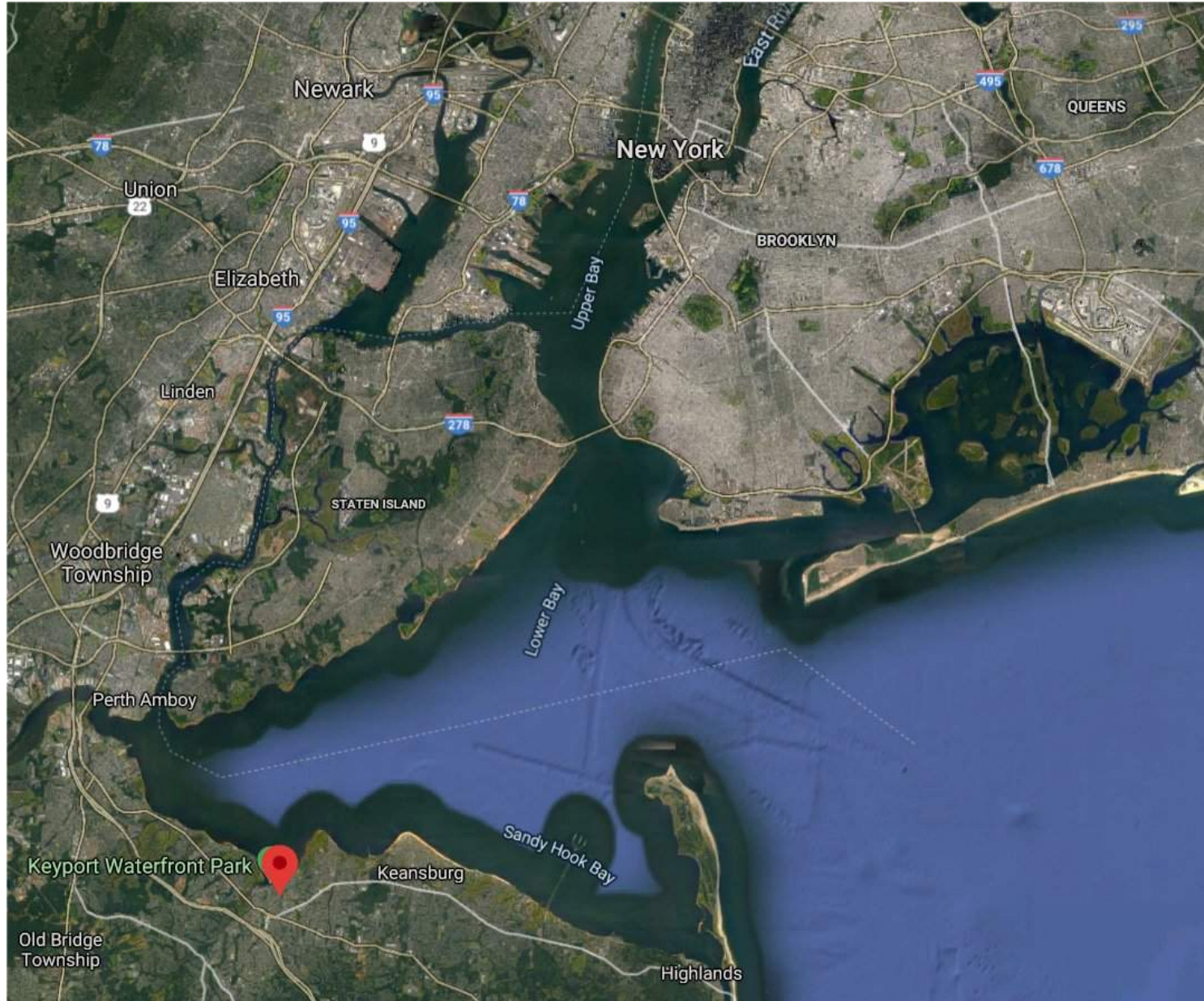


KEYPORT RESIDENTIAL DEVELOPMENT

KEYPORT , NEW JERSEY





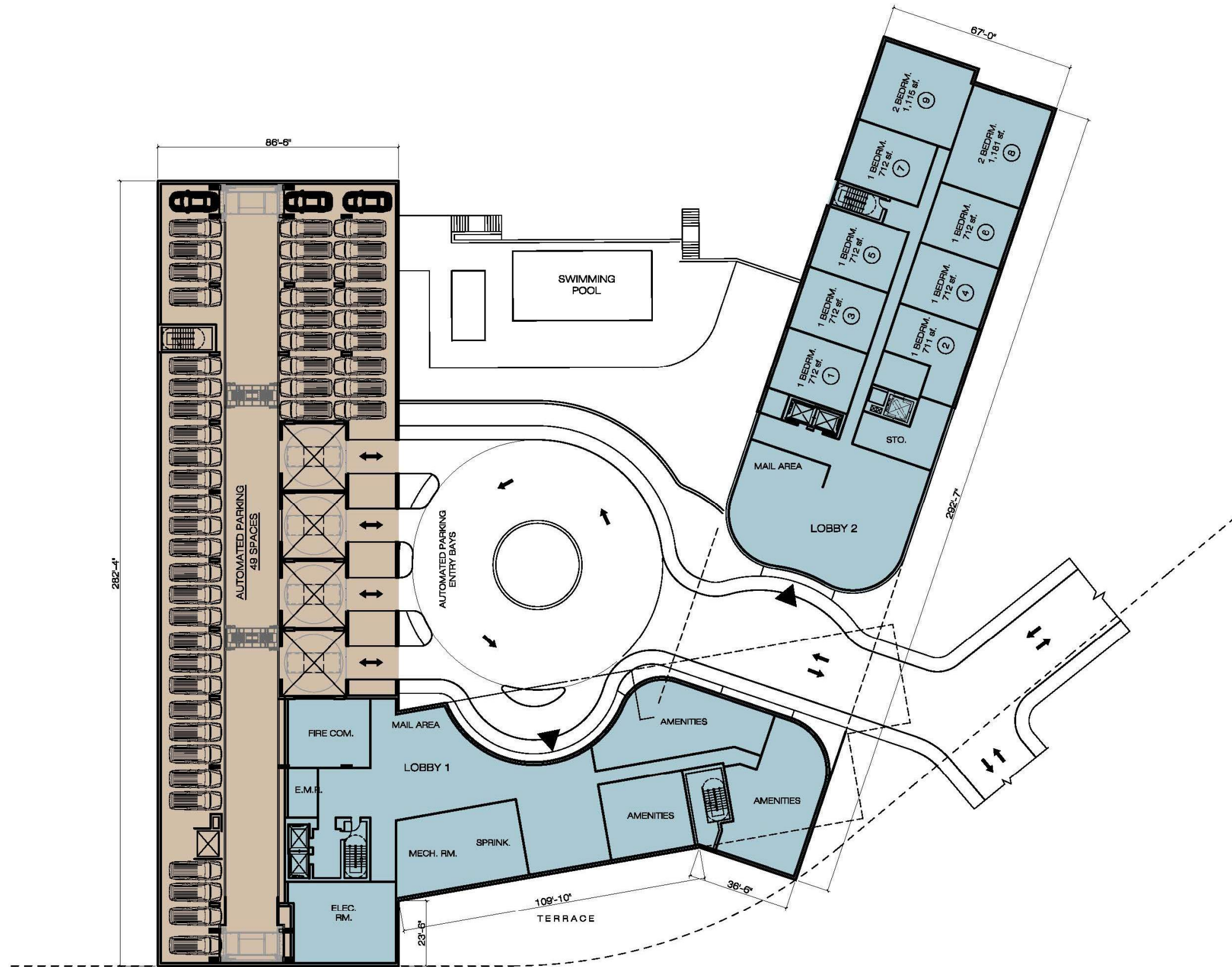
LOCATION



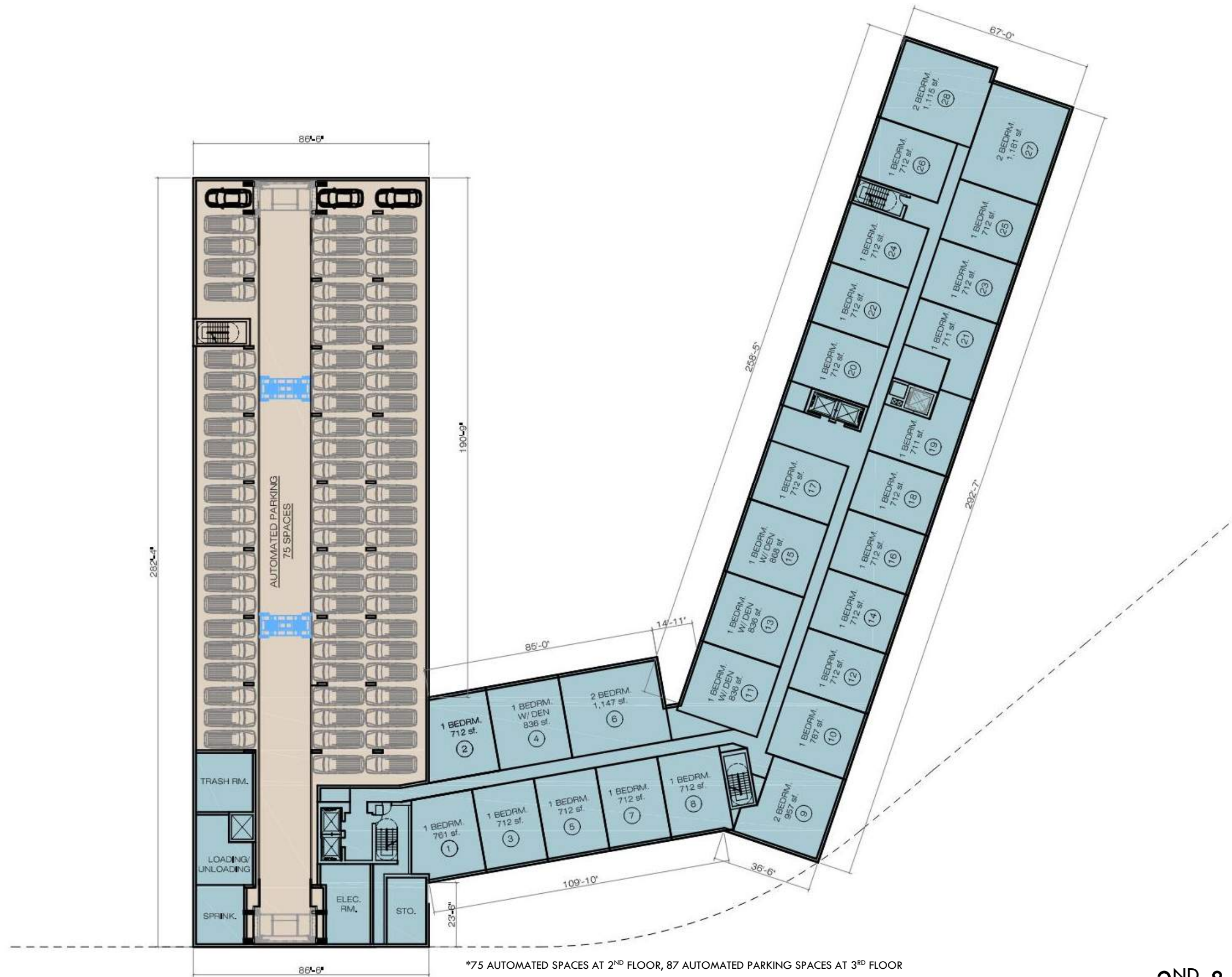
SITE PLAN



SITE PLAN

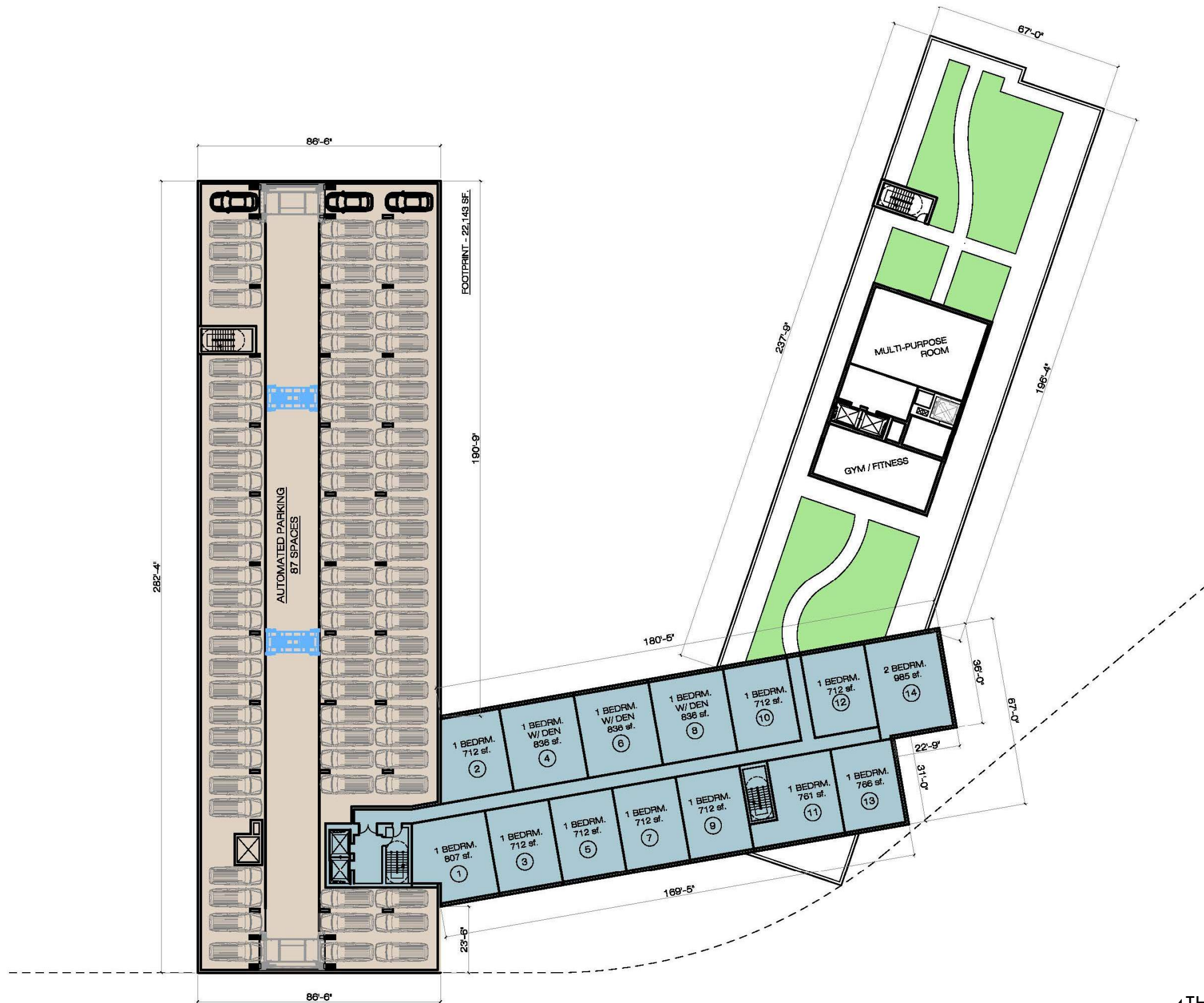


FIRST FLOOR PLAN



*75 AUTOMATED SPACES AT 2ND FLOOR, 87 AUTOMATED PARKING SPACES AT 3RD FLOOR

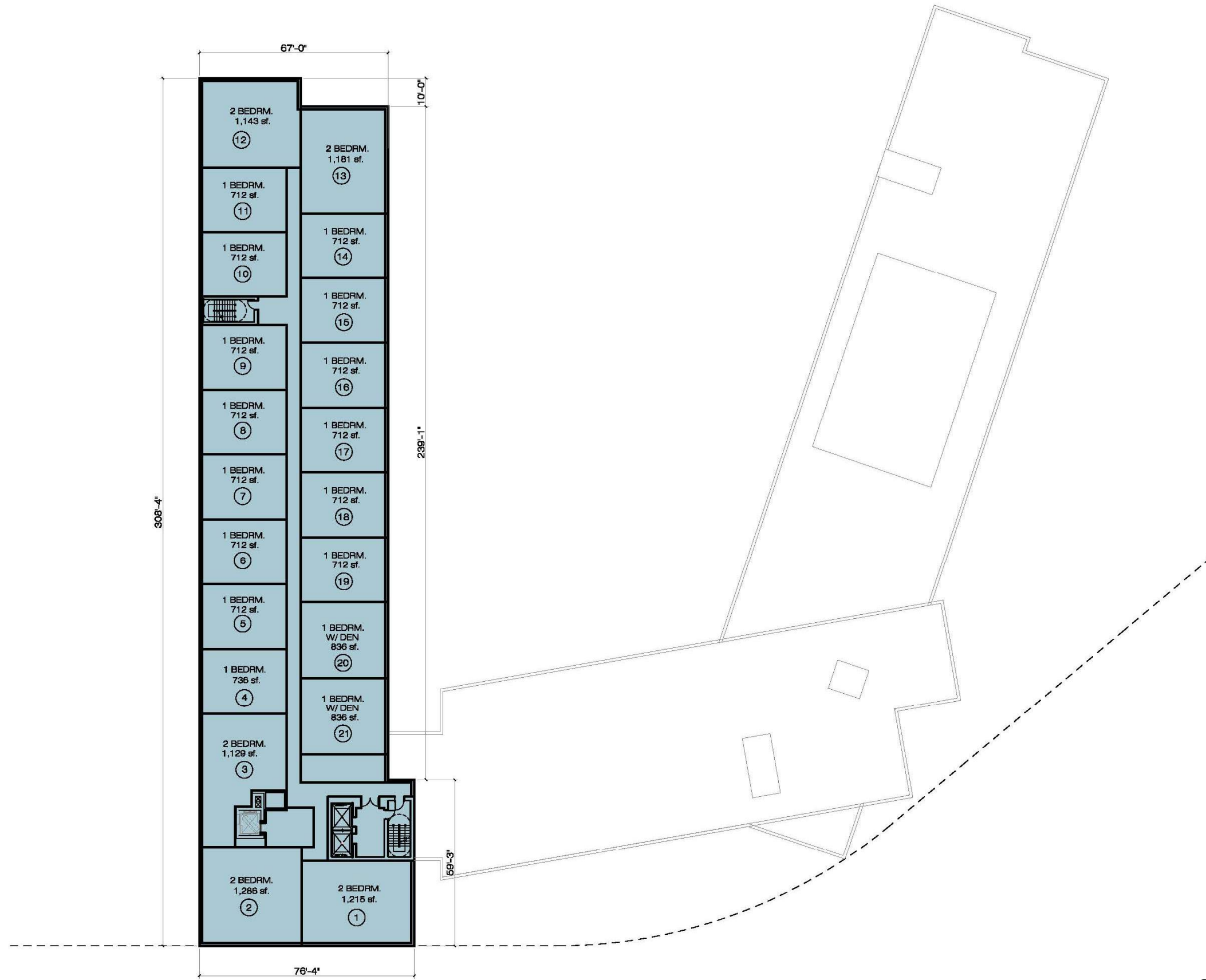
2ND & 3RD FLOOR PLAN



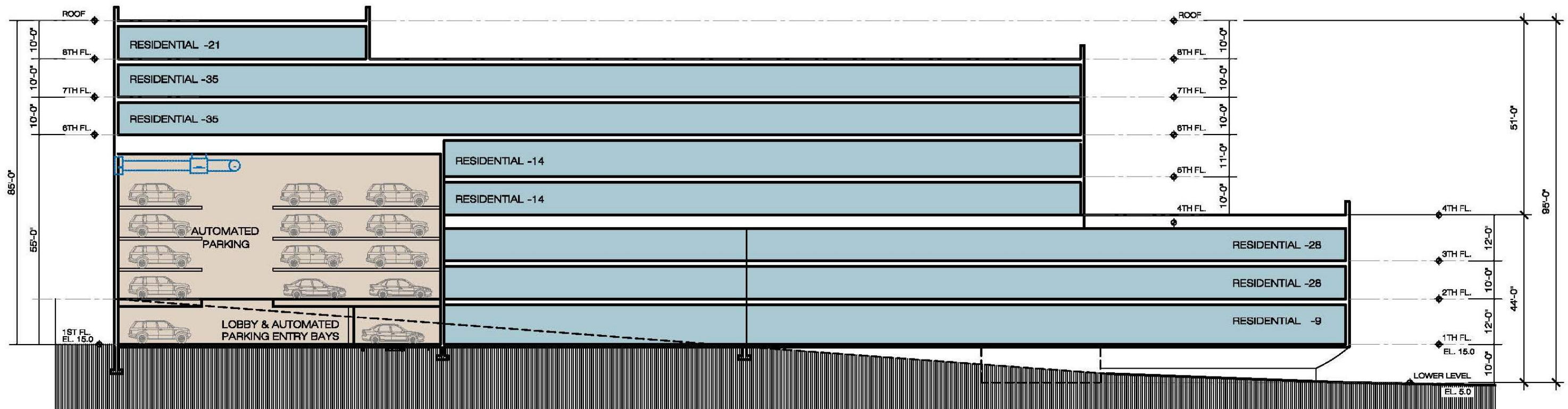
4TH & 5TH FLOOR PLAN



6TH & 7TH FLOOR PLAN



8TH FLOOR PLAN



BUILDING 1 - SECTION

BUILDING SECTION

RESIDENTIAL SUMMARY						AUTOMATED PARKING SUMMARY		
FLOOR	DESCRIPTION	NUMBER OF UNITS				RESIDENTIAL GROSS AREA	PARKING SPACES	AUTOMATED PARKING GROSS AREA
		1 BEDRM (712 sf. Ave.)	1 BEDRM W/ DEN (991 sf. Ave.)	2 BEDRM (1,178 sf. Ave.)	TOTAL UNITS PER FLOOR			
1st FLOOR	RESIDENTIAL LOBBY, RESIDENTIAL UNITS, AMENITIES & MECH. AREAS	7		2	9	24,858 SF	49	24,498 SF
2ND FLOOR	RESIDENTIAL	20	4	4	28	29,709 SF	75	20,435 SF
3RD FLOOR	RESIDENTIAL	20	4	4	28	29,709 SF	87	23,250 SF
4TH FLOOR	RESIDENTIAL	10	3	1	14	12,949 SF	87	23,250 SF
5TH FLOOR	RESIDENTIAL	10	3	1	14	12,949 SF	87	23,250 SF
6TH FLOOR	RESIDENTIAL	23	6	6	35	33,315 SF		
7TH FLOOR	RESIDENTIAL	23	6	6	35	33,315 SF		
8TH FLOOR	RESIDENTIAL	14	2	5	21	20,902 SF		
		127	28	29				
TOTAL					184	197,706 SF	385	114,683 SF

TOTAL BUILDING GROSS AREA ----- 312,389 SF

TOTAL RESIDENTIAL UNITS ----- 184 UNITS

RESIDENTIAL PARKING REQUIREMENT as per R.S.I.S. - Mid Rise Standard			
UNIT TYPE	NUMBER OF UNITS	R. S. I. S. HIGH RISE	NUMBER OF PARKING SPACES
2 BEDROOM	29	2.0	58
1 BEDRM W/ DEN	28	1.8	50.4
1 BEDRM.	127	1.8	228.6
TOTAL RESIDENTIAL PARKING REQUIRED			<u>337 SPACES</u>

TOTAL RESIDENTIAL PARKING REQUIRED ----- 337 SPACES

TOTAL RESIDENTIAL PARKING PROVIDED ----- 385 SPACES

TOTAL SURFACE PARKING PROVIDED ----- 88 SPACES

PROJECT SUMMARY





Architectura
www.architectura.com

KEYPORT RESIDENTIAL DEVELOPMENT
KEYPORT, NJ 04.19.2021